

clever



clever 



55 Royal Navy Avenue

Keyham, Plymouth, PL2 2AG

£280,000

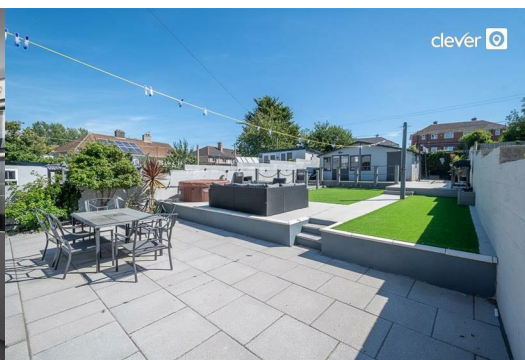
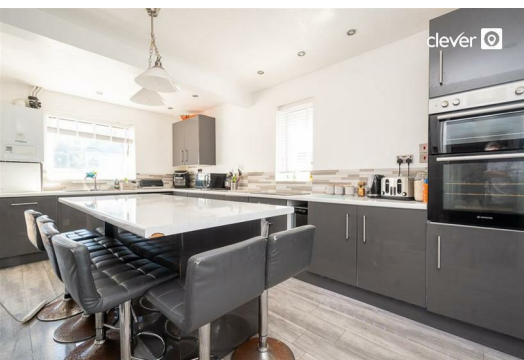


STUNNING REAR GARDEN SPANNING OVER 70FT - This delightful spacious semi-detached house offers a perfect blend of comfort and modern living. Spanning an impressive 1,055 square feet (approx), the property features three well-proportioned bedrooms, making it an ideal home for families or those seeking extra space.

One of the standout features of this property is the glorious south-facing rear garden, which basks in sunlight throughout the day. This outdoor space is perfect for gardening enthusiasts or those who simply wish to enjoy the fresh air. Additionally, the large summer house offers versatile usage, whether as a bar for entertaining guests or a peaceful office space for remote work.

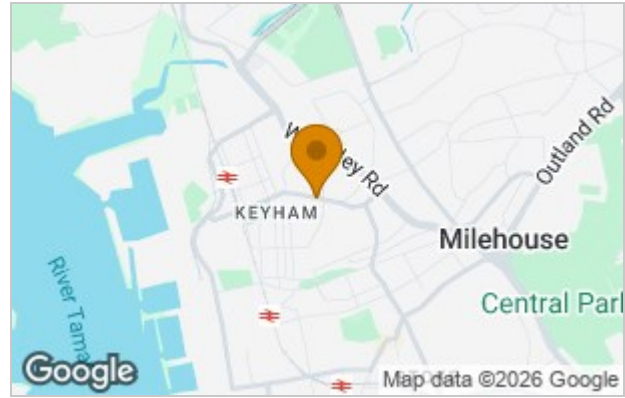
The heart of the home is undoubtedly the beautiful kitchen, complete with a stylish island that not only enhances functionality but also serves as a wonderful gathering spot for family and friends.

Upon entering, you are welcomed into a spacious reception room that exudes warmth and character, providing an inviting atmosphere for relaxation and entertaining. Upstairs you'll find three double bedrooms & a lovely modern shower room.





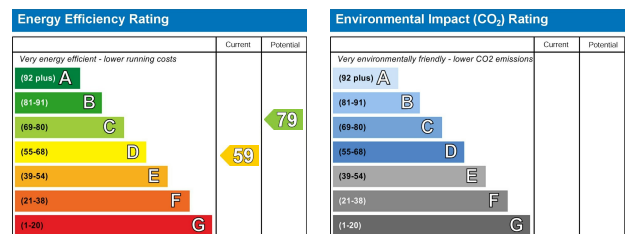
Area Map



Floor Plans



Energy Efficiency Graph



These particulars, whilst believed to be accurate are set out as a general outline only for guidance and do not constitute any part of an offer or contract. Intending purchasers should not rely on them as statements of representation of fact, but must satisfy themselves by inspection or otherwise as to their accuracy. No person in this firm's employment has the authority to make or give any representation or warranty in respect of the property.